

Turnaround Times & Rush Order Fees

Turnaround times for apparel decorating vary greatly based on a variety of factors. Factors that contribute to turnaround times include print method(s), garment type(s), number of print locations, size of the design(s)/stitch counts, order quantity, location the blank garments are sourced from, artwork quality, weather, holidays, etc. AVERAGE standard turnaround times are 5-7 business days. Some orders will be done quicker, others will take longer. For example, screen printing 12 white t-shirts we have in stock with black ink is MUCH faster than ordering 200 hoodies from California that get a DTF design on the front chest, an embroidered sleeve, and individual name and numbers on the backs. Similarly, 20 hats you supply that have a 2500 stitch count design are much faster to complete than 100 hats coming from Texas that need 15K stitches on the front & 3K stitches on the back. Having "print-ready" artwork helps speed up the process. **If you have a hard deadline, please reach out to us with the specific order details BEFORE submitting the order.** Sorry, we cannot accept all orders or meet all deadlines. **Timing is based on either: 1. Date the order is paid (if ordering garments from us); or 2. Date the blanks are received (if garments are customer-supplied).** If we can accept the order, the following Rush Fees apply to orders needed within 4 business days.

Rush order fees only apply to artwork & decorating costs, not on garments. Days refer to our business days, not calendar days.

Same Day(<4 hours): 3X Same Day(>4 hours): 2.5X Next Day: 2X 2 Days: 1.5X 3 Days: 1.25X 4 Days: 1.1X

Blank Garment Information and Pricing

If you supply your own garment(s), **WE ARE NOT RESPONSIBLE FOR THEM.** If an error (human/mechanical/other) is made on our end we will NOT reimburse you for garments not supplied by us, but we *may* reprint a garment you resupply us. The policies you sign when setting up an account cover this in more detail. All bags & labels should be removed (\$.35 fee per tag/sticker/bag requiring removal). We may require an extra garment for testing purposes. We do not inspect outside garments for defects prior to decorating like we do with our shirts.

Garments should be brand new (not washed, worn, & free from stains). For decorating errors:
if you buy a product or service from us, we cover it; if you do not purchase from us, we do not cover it.

Blank apparel catalogs can be found on our website (www.aplusimages.com). Contact us for a quote (style/color/size needed).

Services

ALL PRICING LISTED IS PER IDENTICAL FILE, PRINT METHOD, COLOR, DESIGN SIZE, etc.

Changing any one of these options resets the quantity discounts. Ten one-offs is not the same as ten identical prints.

Visit www.aplusimages.com/services for more information on each print method and artwork file setup guides.

Embroidery

Stitch Count

Quantity	up to 2,000	2,001-4,000	4,001-6,000	6,001-8000	8,001-10,000	10,001-12,500	12,501-15,000	15,001+
1	\$10.75	\$11.50	\$12.50	\$13.50	\$14.50	\$15.50	\$17.00	+\$1.50 per 1K
2-5	\$7.75	\$8.50	\$9.50	\$10.50	\$11.50	\$12.50	\$14.00	+\$1.35 per 1K
6-18	\$7.25	\$8.00	\$8.50	\$9.25	\$10.00	\$11.00	\$12.00	+\$1.20 per 1k
19-30	\$7.00	\$7.75	\$8.25	\$9.00	\$9.50	\$10.50	\$11.25	+\$1.10 per 1k
31-48	\$6.75	\$7.50	\$8.00	\$8.75	\$9.25	\$10.00	\$10.50	+\$1.00 per 1k
49-60	\$6.50	\$7.25	\$7.75	\$8.25	\$8.75	\$9.75	\$10.25	+\$.90 per 1k
61-84	\$6.25	\$7.00	\$7.50	\$8.00	\$8.50	\$9.25	\$9.75	+\$.80 per 1k
85-102	\$6.00	\$6.50	\$7.00	\$7.50	\$8.00	\$8.50	\$9.00	+\$.70 per 1k
103+	\$5.75	\$6.25	\$6.50	\$7.00	\$7.50	\$8.00	\$8.50	+\$.60 per 1k

We require .pxf or .dst files for embroidery. Poorly digitized files are subject to surcharges. We can digitize files if you cannot provide one. Basic digitizing is \$35 for up to 15,000 stitches, and \$1.50 per 1K stitches for designs >15k stitches. Advanced digitizing is \$10 per 1K stitches (\$35 min). A sewout is included when we digitize your file. ADD ONS: Add \$0.20 per 1,000 stitches for metallic thread. Add \$3.25 per patch if ≤ 16 sq inches. Patches > 16 sq inches must be custom-quoted. Add \$3.00 per patch to apply to garment. Add \$4.50 per area for puff. Add \$0.75 per embroidered area if water soluble stablizer is required (EX: microfleece, towels, beanies, blankets, etc.). Add \$1.50 per cap. Add \$1.50 per area for difficult to hoop garments (wrists of long sleeve shirts, pant legs, odd locations w/ interfering garment features (like tags, pockets, and zippers), etc.).

Orders require 100% prepayment, unless garments are customer supplied. If garments are customer-supplied, up to 50% down may be required to start. The balance is due at pickup. We accept credit & debit. We do not offer terms.

Pricing is subject to change at any time. Visit www.aplusimages.com/price-lists for current pricing.

Artwork Charges

All pricing is based on "print-ready" artwork. An artwork charge will apply if we have to create, improve, resize, or recolor your art. Artwork charges are \$90/hr (\$10.00 min). Viewing/responding to non-print-ready art is subject to a \$5.00 charge per image.

Learn more at www.aplusimages.com/services on how to create print-ready artwork for each decoating method.

Direct-to-Garment (DTG) Pricing

It is **STRONGLY** recommended you review our website before submitting orders requiring DTG printing. Quality printing depends on it!

While pretty much any file that can be opened in Photoshop can be printed using direct-to-garment technology, the guidelines, file setups, and limitations listed on our website are necessary to follow for optimal results and proper pricing.

Pricing for all DTG printing is per location. All print pricing includes pretreatment.

Size Key and Examples

Size Category	1	2	3	4	5	6
Image Size (in sq in)	up to 24 sq in	24.01-80 sq in	80.01-120 sq in	120.01-168 sq in	168.01-252 sq in	>14" wide OR >18" tall
Size Examples	4" x 6" 2" x 12"	8" x 10" 6" x 13"	10" x 12" 8.5" x 14"	12" x 14" 9" x 18"	14" x 18" 12" x 15"	16" x 20" 15" x 19"
Product Examples	Short sleeves, tags, masks, left & right chest prints	Onesies, small tote bags, toddler shirts	Youth & Adult shirts, large tote bags	Adult Shirts	Adult Shirts	2XL+ Adult Sizes Only

Epson DTG Surcharges (See website for full details)

Add \$5.50 per print if the long sleeve pallet (4" x 18") is required.
Add \$3 per short sleeve print.
Add \$2 per print if the wrap around pallet is required
Add \$2 per print if the zip-up hoodie pallet is required
Add \$3 per print if a garment doesn't lay flat on a pallet
Add \$2.50 per area for additional pretreat on shirts with a > 6oz/yd fabric weight
For precision placements (such as on or above a pocket where exact location matters) add \$3.00 per print area

White Shirts (Color Ink Only) or Black Ink

Size Category (see key at top left corner of page)						
Quantity	1	2	3	4	5	6
1	\$10.25	\$11.75	\$13.25	\$15.00	\$16.75	\$19.00
2-6	\$7.25	\$8.75	\$10.25	\$12.00	\$13.75	\$16.00
7-12	\$6.75	\$8.25	\$9.50	\$11.00	\$12.75	\$15.00
13-24	\$6.50	\$7.75	\$9.00	\$10.50	\$12.00	\$14.25
25-36	\$6.00	\$7.00	\$8.25	\$9.75	\$11.00	\$13.25
37-60	\$5.50	\$6.75	\$7.75	\$9.00	\$10.25	\$12.50
61-84	\$5.25	\$6.00	\$7.00	\$8.50	\$9.50	\$11.75
85-100	\$4.75	\$5.50	\$6.50	\$7.50	\$8.50	\$10.75
101+	\$4.25	\$5.25	\$6.00	\$6.75	\$7.75	\$10.00

Colored Shirts (Color + White ink)

Size Category (see key at top left corner of page)						
Quantity	1	2	3	4	5	6
1	\$13.00	\$16.00	\$18.75	\$21.50	\$24.00	\$26.25
2-6	\$10.00	\$13.00	\$15.75	\$18.50	\$21.00	\$24.25
7-12	\$9.00	\$11.50	\$14.25	\$16.75	\$19.25	\$21.50
13-24	\$8.50	\$10.50	\$12.50	\$15.00	\$17.50	\$19.75
25-36	\$8.00	\$9.75	\$11.25	\$13.50	\$15.75	\$18.00
37-60	\$7.25	\$8.75	\$10.50	\$12.25	\$14.00	\$17.00
61-84	\$6.75	\$8.50	\$10.00	\$11.50	\$13.25	\$15.50
85-100	\$6.50	\$8.00	\$9.50	\$11.00	\$12.50	\$14.75
101+	\$6.00	\$7.50	\$9.00	\$10.25	\$11.50	\$13.75

White Ink Only

Size Category (see key at top left corner of page)						
Quantity	1	2	3	4	5	6
1	\$11.25	\$13.50	\$16.00	\$18.25	\$21.50	\$22.75
2-6	\$8.25	\$10.50	\$13.00	\$15.25	\$17.50	\$19.75
7-12	\$7.50	\$9.50	\$11.50	\$13.25	\$16.00	\$18.25
13-24	\$7.25	\$8.75	\$10.75	\$12.75	\$14.75	\$17.00
25-36	\$6.75	\$8.50	\$10.00	\$12.00	\$13.50	\$15.75
37-60	\$6.00	\$8.25	\$9.25	\$10.25	\$12.00	\$14.25
61-84	\$5.75	\$7.50	\$8.50	\$9.50	\$11.50	\$13.75
85-100	\$5.50	\$7.00	\$8.00	\$9.00	\$10.50	\$12.75
101+	\$5.00	\$6.00	\$7.50	\$8.50	\$9.75	\$12.00

Notes About Epson F3070 DTG Printing

1. This method of DTG printing is only recommended for select 100% combed-cotton ringspun shirts in select colors. Our picks: Black and white G640/G640B
2. For the most accurate color, design files in RGB format, at 300 dpi, in the size you want them printed. Export them in PNG file format. Our RIP software has been color-profiled, but will not be a perfect match to PANTONE colors. Files created in CMYK mode or using PMS colors will be less color accurate than RGB.
3. When printing on black shirts, we **may** remove the black from the design. This allows the print to look like it comes out of the shirt, making the print look amazing. This only works when with files made in RGB mode where the code for black is (0/0/0). Other codes for black are "dark grey" & not removed.
4. You will see a heat press box on completed shirts. This washes out.

Sublimation Transfers

Paper Size	Nickname	Printable Area	Quantity						Price Per Sheet
			1	2-6	7-12	13-18	19-24	25+	
8.5" x 11"	Letter	8" x 10.5"	\$ 5.00	\$ 4.50	\$ 4.00	\$ 3.50	\$ 3.25	\$ 3.00	
11" x 17"	Tabloid/B Ledger	10.5" x 16.5"	\$ 8.00	\$ 7.50	\$ 7.00	\$ 6.50	\$ 6.25	\$ 6.00	
13" x 19"	Super A3/ Super B	12.5" x 18.5"	\$ 11.00	\$ 10.50	\$ 10.00	\$ 9.50	\$ 9.25	\$ 9.00	

Above pricing is for transfer sheets only. Add \$7 per print area to apply transfers to products.

Orders require 100% prepayment, unless garments are customer supplied. If garments are customer-supplied, up to 50% down may be required to start. The balance is due at pickup. We accept credit & debit. We do not offer terms.

Pricing is subject to change at any time. Visit www.aplusimages.com/price-lists for current pricing.

Retail Price List for Custom Decorated Garments (as of 9/3/2024)

info@aplusimages.com www.aplusimages.com 317-405-8955

Pad Printing: Used for Tagless Label Printing/Custom Branding

There is plate laser engraving charge of \$40 for each unique template and a 2.5" diameter maximum image size.

Visit <https://www.aplusimages.com/services/tagless-label-printing/> for a full explanation of tag requirements.

QTY	<24	24-36	37-48	49-60	61-84	85-108	109-204	205-350	351+
Price	see below	\$3.00/ea	\$2.75/ea	\$2.50/ea	\$2.25/ea	\$2.00/ea	\$1.75/ea	\$1.65/ea	\$1.60/ea

For less than 24 identical prints, there is a \$20 setup fee plus a fee of \$3.50 per print. DTG or custom transfers may be a better option for you if you are frequently tagging less than 24 of an identical print.

Print pricing includes removal of tearaway tags.

We only stock white and black ink for pad printing. Other colors are available via special order.

There is a \$20 color change fee when using the same plate.

Laser Etching/Engraving/Cutting with an Epilog Fusion Pro 50 Watt CO2 laser

(32" x 20" x 12.25" size limit & 100 lb product weight limit)

For all Drinkware items (3" x 3" max area): \$10 setup fee + \$7.50 per item. For all other items, see chart below:

QTY	Price	QTY	Price	QTY	Price	QTY	Price	QTY	Price
1	\$4.00/min	6-10	\$2.25/min	21-30	\$1.90/min	46-65	\$1.70/min	81-100	\$1.55/min
2-5	\$3.00/min	11-20	\$2.00/min	31-45	\$1.80/min	66-80	\$1.60/min	101+	\$1.50/min

One (1) minute minimum per item. Add \$1.00 per piece if item is cylindrical/requires rotary. Email artwork to info@aplusimages.com for a quote. Visit <https://www.aplusimages.com/services/laser-cutting-engraving> for file requirements.

If bringing your own items, bringing an extra item for testing is recommended (required for cylindrical items).

Colored T-Shirt Vinyl (cut on on 24" Roland cutters)

Standard Vinyl (Siser EasyWeed)-For cotton, polyester, cotton/poly blends, and leather

Names (2" tall)	\$5.50	Numbers (6" tall)	\$7.00	2" tall Name & 6" tall Number	\$10.00
Names (3" tall)	\$6.00	Numbers (8" tall)	\$7.50	3" tall Name & 8" tall Number	\$11.00
Numbers (3" tall)	\$5.50	Numbers (4" tall)	\$5.75	Numbers (5" tall)	\$6.50
Numbers (7" tall)	\$7.25	Numbers (10" tall)	\$8.50	Blank vinyl \$4.50/ft (must be purchased online)	

For other vinyl, price equals: length of vinyl (\$4.50/ft) + time (\$90/hr) + \$3.00 per heat press hit (\$5.50 minimum)

Stock EasyWeed colors: Black, Bubble Gum, Cardinal, Flo Green, Flo Orange, Flo Pink, Flo Yellow, Gold, Green, Green Apple, Grey, Lemon, Lt Pink, Navy, Orange, Pale Blue, Passion Pink, Purple, Red, Royal, Silver, Sky Blue, Sun Yellow, Turquoise, Vegas Gold, & White. Additional colors can be ordered.

We also stock Siser EasyWeed Stretch for use on Spandex/Lycra fabrics. Pricing is the same as listed above.

Stock EasyWeed Stretch colors: Black, Purple Berry, & White. Additional colors can be ordered.

Glitter Vinyl (Siser Glitter)-For cotton, polyester, cotton/poly blends, and leather

Names (2" tall)	\$6.50	Numbers (6" tall)	\$9.00	2" Tall Name & 6" Tall Number	\$13.50
Names (3" tall)	\$7.00	Numbers (8" tall)	\$10.00	3" Tall Name & 8" tall number	\$14.50
Numbers (3" tall)	\$6.50	Numbers (4" tall)	\$7.75	Numbers (5" tall)	\$8.25
Numbers (7" tall)	\$9.25	Numbers (10" tall)	\$10.75	Blank vinyl \$6.75/ft (must be purchased online)	

For other vinyl, price equals: length of vinyl (\$6.75/ft) + time (\$90/hr) + \$3.00 per heat press hit (\$6.50 minimum)

Stock Glitter colors: Aqua, Black, Black Gold, Black Silver, Blush, Cherry, Copper, Gold, Grass, Hot Pink, Jade, Lavender, Old Gold, Purple, Red, Rose Gold, Royal, Sapphire, Silver, & White. Additional colors can be ordered.

FOR ALL HEAT PRESS APPLICATIONS, ADD \$1 PER NON-FLAT AREA (SLEEVES, HOODS, PANT LEGS, POCKETS, ETC.)

For all types of vinyl, standard fonts for names and numbers are "Impact" and "College-Black".

BLANK VINYL BY THE FOOT MUST BE ORDERED ONLINE!

Rhinestones: Rhinestone transfers are priced on a case-by-case basis (stone counts, color & sizes of the stones/studs used, qty, etc.)

Orders require 100% prepayment, unless garments are customer supplied. If garments are customer-supplied, up to 50% down may be required to start. The balance is due at pickup. We accept credit & debit. We do not offer terms.

Pricing is subject to change at any time. Visit www.aplusimages.com/price-lists for current pricing.

Retail Price List for Custom Decorated Garments (as of 9/3/2024)

info@aplusimages.com www.aplusimages.com 317-405-8955

Sign Vinyl (Print and cut on Roland True-Vis V2G-540 with TR2 CMYKLcLmLkOr inks)

There is a lot of information to know about our print & cut vinyl offerings. Please visit www.aplusimages.com/services/signs for more information and downloadable PDFs on the products below. We do not install any graphics.

Vinyl Banners (Gloss or Matte)

9x9 scrim, 1000 denier, 13 oz matte banner; Tear & fade resistant. Hemmed & Grommated

Banner Size	Price each	Banner Size	Price each
Number of grommets in ()		Number of grommets in ()	
1' x 2' (4)	\$36.00	2' x 7' (8)	\$118.00
1' x 3' (4)	\$39.00	2' x 8' (8)	\$132.00
1' x 4' (4)	\$42.00	3' x 4' (4)	\$70.00
1' x 5' (6)	\$80.00	3' x 5'* (6)	\$97.00
1' x 6' (6)	\$98.00	3' x 6' (6)	\$109.00
1' x 7' (8)	\$110.00	3' x 7' (8)	\$125.00
1' x 8' (8)	\$123.00	3' x 8' (8)	\$139.00
2' x 3' (4)	\$53.00	4' x 5' (10)	\$101.00
2' x 4'* (4)	\$57.00	4' x 6' (10)	\$116.00
2' x 5' (6)	\$90.00	4' x 7' (12)	\$132.00
2' x 6' (6)	\$104.00	4' x 8'* (12)	\$147.00

*Most popular sizes
For other sizes or bulk (3+) orders, email your design & QTY for a custom quote.

Posters

8.5 mil Matte Poster Paper

Poster Size	Price ea for 1	Price ea for 2	Price ea for 3	Price ea for 4
8.5" x 11"	\$22.50	\$15.00	\$9.00	\$6.00
11" x 17"*	\$24.00	\$16.50	\$10.50	\$7.50
12" x 18"	\$25.50	\$18.00	\$12.00	\$9.00
13" x 19"	\$27.00	\$19.50	\$13.50	\$10.50
16" x 20"*	\$30.00	\$21.75	\$15.00	
18" x 24"*	\$33.00	\$24.00		
20" x 30"	\$39.00	\$26.25		
22" x 28"	\$40.50	\$28.50		
24" x 36"*	\$42.00	\$30.75		
27" x 40"	\$45.00	\$44.00		
36" x 48"	\$52.50	\$51.50		

If pricing is in contrasting color, order in multiples of that quantity for best rates.

*Most popular sizes
1/8" bleed or cropmarks required in artwork file
For all other sizes, email your design for a custom quote

Pop-up banner with stand; 10 mil non-curling; white, semi-gloss synthetic polyester; grey opaque back; non-curling; 33" x 78" \$160.00

Decals/Stickers: Orafol 3641 (3 mil; economy grade gloss film; grey adhesive; permanent-simple shapes only-squares/rectangles/circles/ovals) &

Orajel Clear (3 mil; transparent gloss film; clear, water-based, removable adhesive; 4 year durability-simple shapes only-squares/rectangles/circles/ovals)

Size (sq in)	Quantity										A \$12 setup fee applies if the file does not have a properly setup bleed and/or outline. See website for details.	For all other media types or custom shapes, email your artwork and order details to info@aplusimages.com.
	1-5	6-10	11-25	26-50	51-100	101-200	201-350	351-500	501+			
0-2	\$15.00	\$7.50	\$3.75	\$1.88	\$0.90	\$0.45	\$0.30	\$0.23	\$0.15			Removable Wall Decals
2.01-4	\$15.75	\$7.88	\$3.94	\$1.97	\$0.98	\$0.53	\$0.38	\$0.30	\$0.23			
4.01-6	\$16.50	\$8.25	\$4.13	\$2.06	\$1.05	\$0.60	\$0.45	\$0.38	\$0.30			Hard Floor Decals
6.01-8	\$17.25	\$8.63	\$4.31	\$2.16	\$1.13	\$0.68	\$0.53	\$0.45	\$0.38			
8.01-10	\$18.00	\$9.00	\$4.50	\$2.25	\$1.20	\$0.75	\$0.60	\$0.53	\$0.45			Carpet Decals
10.01-12	\$18.75	\$9.38	\$4.69	\$2.34	\$1.28	\$0.83	\$0.68	\$0.60	\$0.53			
12.01-15	\$19.50	\$9.75	\$4.88	\$2.44	\$1.35	\$0.90	\$0.75	\$0.68	\$0.60			Laminating
15.01-18	\$20.25	\$10.13	\$5.06	\$2.53	\$1.43	\$0.98	\$0.83	\$0.75	\$0.68			
18.01-21	\$21.00	\$10.50	\$5.25	\$2.63	\$1.50	\$1.05	\$0.90	\$0.83	\$0.75			Wide-format Photos
21.01-24	\$21.75	\$10.88	\$5.44	\$2.72	\$1.58	\$1.13	\$0.98	\$0.90	\$0.83			
24.01-27	\$22.50	\$11.25	\$5.63	\$2.81	\$1.65	\$1.20	\$1.05	\$0.98	\$0.90			Digital Shirt Transfers
27.01-30	\$23.25	\$11.63	\$5.81	\$2.91	\$1.73	\$1.28	\$1.13	\$1.05	\$0.98			
30.01-35	\$24.00	\$12.00	\$6.00	\$3.00	\$1.80	\$1.35	\$1.20	\$1.13	\$1.05			Other Materials
35.01-40	\$24.75	\$12.38	\$6.19	\$3.09	\$1.88	\$1.43	\$1.28	\$1.20	\$1.13			
40.01-45	\$25.50	\$12.75	\$6.38	\$3.19	\$1.95	\$1.50	\$1.35	\$1.28	\$1.20			
>45 sq in	Email artwork and details to info@aplusimages.com for a quote											

*******Additional Services*****\$10 Minimum Surcharge Per Order If These Services Are Requested*******

Pricing below is for short and long sleeve t-shirts only. Bulkier products priced on a case-by-case basis.

Folding		Polybagging		Apply Sticker(s)	
Quantity	Price each	Quantity	Price each	Quantity	Price each
1-12	\$ 1.00	1-12	\$ 1.00	1-12	\$ 0.40
13-50	\$ 0.75	13-50	\$ 0.90	13-50	\$ 0.30
51-100	\$ 0.60	51-100	\$ 0.80	51-100	\$ 0.20
101+	\$ 0.45	101+	\$ 0.70	101+	\$ 0.10

Notes
Our standard polybag is a 1.5 Mil clear 12" x 15" bag. Stickers can be customer-supplied or ordered from us.

Orders require 100% prepayment, unless garments are customer supplied. If garments are customer-supplied, up to 50% down may be required to start. The balance is due at pickup. We accept credit & debit. We do not offer terms.

Pricing is subject to change at any time. Visit www.aplusimages.com/price-lists for current pricing.

Direct-to-Film (DTF) Transfers

Direct-to-Film (DTF) transfers are the newest craze in the apparel decorating industry. We sell transfers and also decorate apparel using DTF transfers. DTF transfers are the best choice for printing full color images on polyester & blends instead of using DTG, which is designed for 100% cotton. Transfers bond to most apparel, but not all apparel can withstand a heat press. Visit our website for more details.

There is a \$30 per order & \$1.25 per transfer minimum on all DTF orders!

Designs can be combined to hit the \$30 per order minimum, but only identical designs apply to quantity discounts.

	Quantity						
	1-4	5-10	11-20	21-40	41-65	66-100	101+
Price per square inch	\$ 0.12	\$ 0.10	\$ 0.09	\$ 0.08	\$ 0.075	\$ 0.07	\$ 0.065

Above pricing is for transfer sheets only.

Add \$4 per print area to apply transfers to flat areas (front and back of t-shirts).

Add \$5 per print area to apply transfers to non-flat areas (sleeves, pockets, hats, onesies, etc.)

Screen Printing (Pricing is per print location) 12" x 15" max print area

We mainly offer 1 color screen printing on cotton or cotton/poly blends of t-shirts. White, Red, Black, & Vegas Gold ink are stocked for 100% polyester garments. We do not screen print on fleece, nylon, vinyl, etc. Two-color screen printing will be offered on a case-by-case basis, depending on the design and our production schedule. For most jobs, we require vector art for screen printing. For multiple print colors, DTG, DTF, or screen printed transfers (priced on a case-by-case basis) may be a better option.

	Quantity								
	12-18	19-36	37-60	61-84	85-144	145-204	205-300	301-499	500+
Stock 1 color	\$7.00	\$5.50	\$4.50	\$4.00	\$3.50	\$3.25	\$3.00	\$2.50	\$2.25
Stock 1 color w/ flash	\$7.50	\$6.00	\$5.00	\$4.50	\$4.00	\$3.75	\$3.50	\$3.00	\$2.75
Stock 2 color	N/A	N/A	\$6.00	\$5.50	\$5.00	\$4.75	\$4.50	\$4.00	\$3.75
Non-stock color(s)	Priced as above plus the cost of the special order ink-quoted on a case-by-case basis								

Stock colors: Black, Green, Forest Green, Light Gold, Metallic Gold, Metallic Silver, Vegas Gold, Navy, Orange, Passion Pink, Purple, Red, Royal, White

Flash necessity depends on shirt/ink color combo chosen. In general, light ink on dark shirts is flashed, dark ink on light shirts is not.

For less than 12 shirts, pricing will be at the 12-18 amounts, plus a \$35 setup fee. Add \$1.50 per print for long sleeve prints.

Artwork Proofs & Mockups

There is a large difference between artwork proofs & mockups. Artwork proofs are images of the design/artwork. Mockups are images of the design(s) simulated on products. The following bullet points explain what we do & don't do in regards to proofs and mockups.

- If you have us create the artwork, we will send a copy of the print-ready file for your approval before production begins.
- If we digitize a design for embroidery, we will send you a photograph of an actual sewout for approval before production begins.
 - It is important to understand that colors you see on your screen are not exactly the same as the actual results.
 - If you supply print-ready artwork, there isn't anything for us to send that is more realistic than what you sent us.
- If a virtual mockup is required, it is \$15 per decoration area. The mockup should be treated as a ROUGH guide only. It will not be accurate to color, size, or placement on most items. The reason for this? Shirt sizes vary greatly. The shirt used in the mockup is unknown, and a 4" wide design doesn't look close the same on youth small shirt as it does and adult 5XL. Providing a mockup on one unknown shirt size falsely represents how the bulk of the order will look. This is why we do not recommend mockups.
- The exception to our mockup policy is when same-sized, hard-good promotional products are ordered. Pens, cups, tumblers, etc. will not vary by size & a mockup will be a quite accurate (though not perfect) representation of the final product. Mockups are included in these items.
 - What we recommend instead: Printing your design out in it's actual size, cutting it out, and laying it on top of various shirt sizes.
- **If you need exact, life-like proofs, the only way to obtain this is ordering a sample. This is done at the 1 piece price.**

Orders require 100% prepayment, unless garments are customer supplied. If garments are customer-supplied, up to 50% down may be required to start. The balance is due at pickup. We accept credit & debit. We do not offer terms.

Pricing is subject to change at any time. Visit www.aplusimages.com/price-lists for current pricing.

CUSTOM KNITWEAR

Allow 2-4 weeks for processing using standard tags.

Allow 6-8 weeks for processing using custom tags.

Knit Beanie							
	Quantity						
	24-47	48-71	72-143	144-287	288-575	576-999	1000+
Price Per Hat	\$ 15.19	\$ 10.95	\$ 8.36	\$ 7.55	\$ 7.14	\$ 6.94	\$ 6.85

Knit Beanie with POM							
	Quantity						
	24-47	48-71	72-143	144-287	288-575	576-999	1000+
Price Per Hat	\$ 16.60	\$ 12.38	\$ 9.78	\$ 8.98	\$ 8.55	\$ 8.36	\$ 8.26

Fold Up Knit Cap							
	Quantity						
	24-47	48-71	72-143	144-287	288-575	576-999	1000+
Price Per Hat	\$ 16.68	\$ 12.45	\$ 9.86	\$ 9.04	\$ 8.64	\$ 8.43	\$ 8.35

Fold Up Knit Cap with POM							
	Quantity						
	24-47	48-71	72-143	144-287	288-575	576-999	1000+
Price Per Hat	\$ 18.35	\$ 14.11	\$ 11.53	\$ 10.71	\$ 10.29	\$ 10.08	\$ 10.00

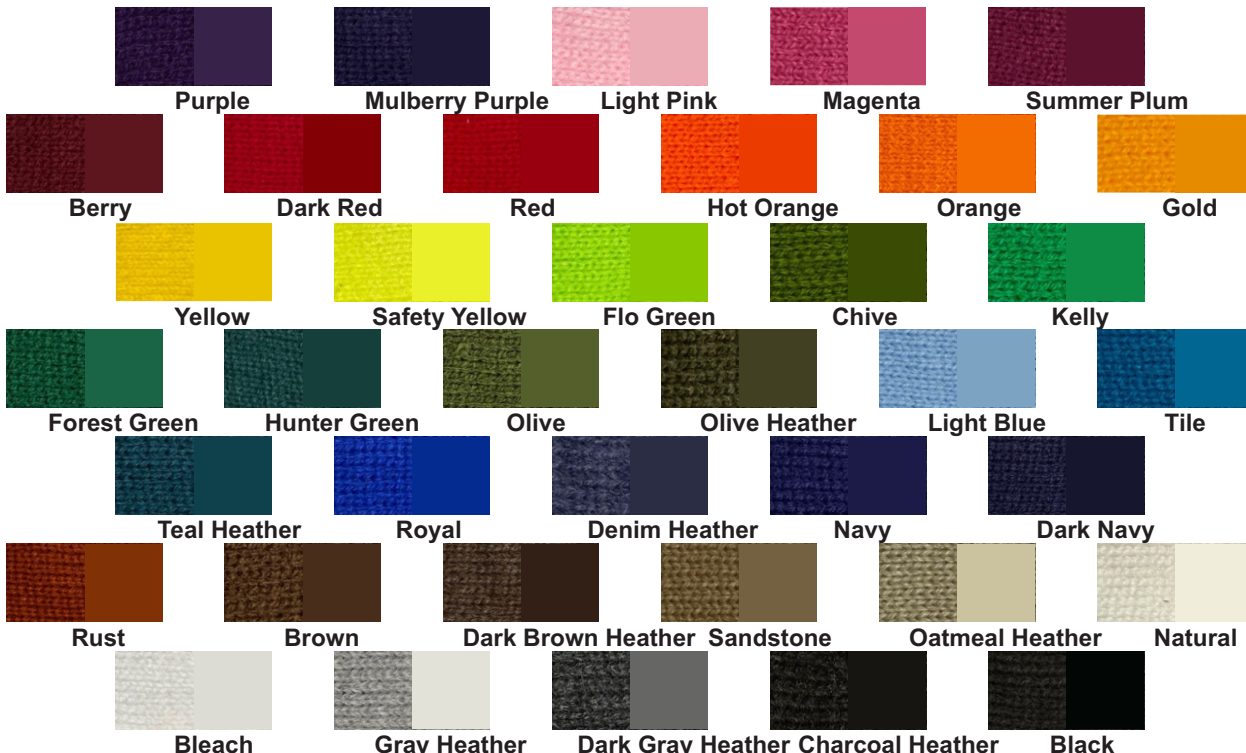
Knit Scarf with Fringe							
	Quantity						
	24-47	48-71	72-143	144-287	288-575	576-999	1000+
Price Per Scarf	\$ 28.80	\$ 24.58	\$ 21.98	\$ 21.17	\$ 20.76	\$ 20.55	\$ 20.47

Custom tagging is optional. \$200 for 1000 tags.

Embroidery add-ons are optional. Pricing for embroidery can be found on page 1 of our price chart.

A flat-rate shipping charge of \$30 applies to all orders from the manufacturer to our shop.

38 STOCK YARN COLORS



Custom knitwear is only compatible with simple logos and designs.



Orders require 100% prepayment, unless garments are customer supplied. If garments are customer-supplied, up to 50% down may be required to start. The balance is due at pickup. We accept credit & debit. We do not offer terms.

Pricing is subject to change at any time. Visit www.aplusimages.com/price-lists for current pricing.